

YEAR 2023

COVERAGE (B) STATION 6219

ROAD NETWORK MAJOR

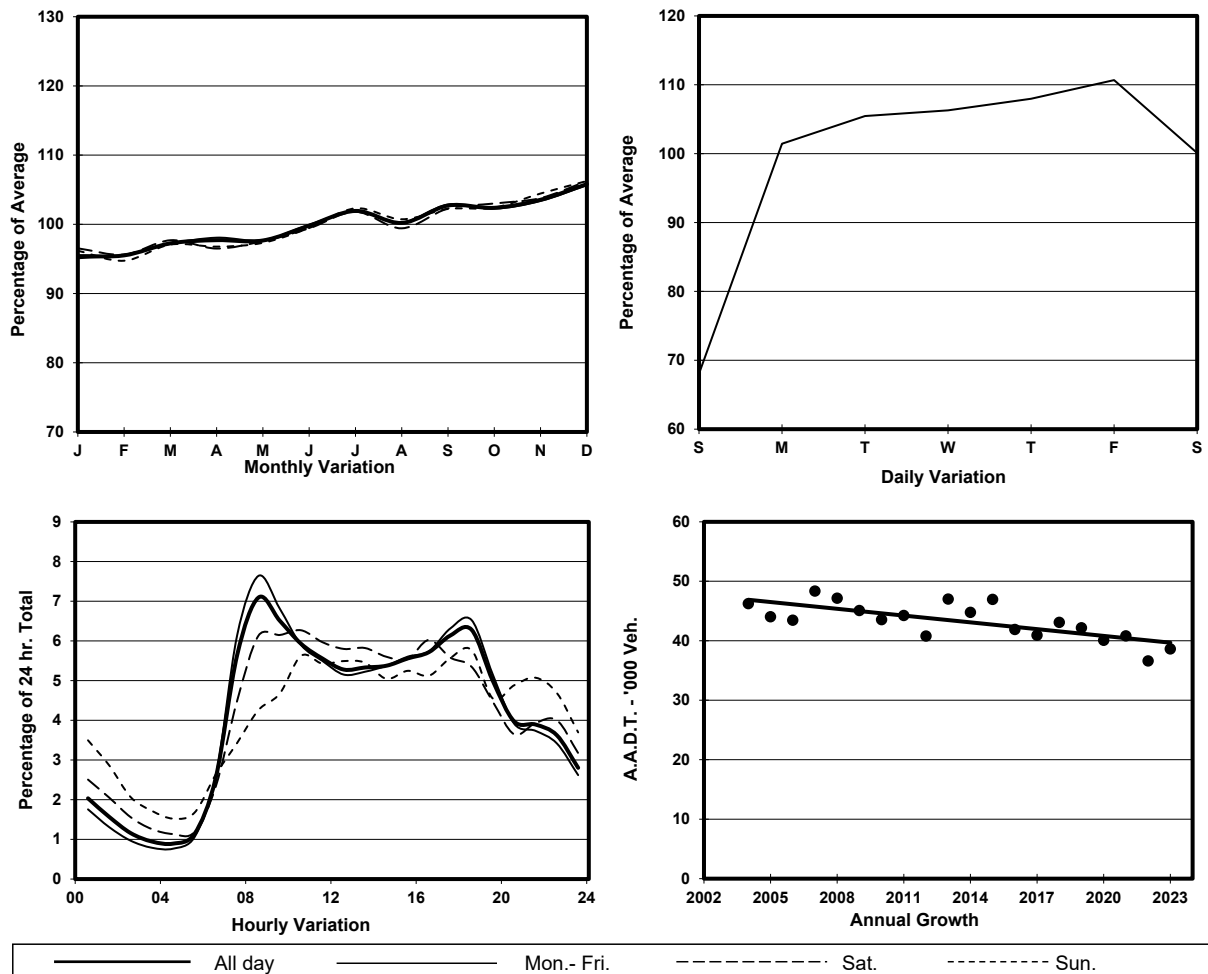
ROAD TYPE DISTRICT DISTRIBUTOR

LINK KWAI TSING RD & TSING YI S BRIDGE (from TSING YI RD to KWAI TAI RD INT)

8.8m
E bound 2 lanes

10m
W bound 3 lanes

1. TRAFFIC FLOW VARIATION AND GROWTH



2. TRAFFIC CHARACTERISTICS (BY DIRECTION)

Parameter	All - Day	Mon. - Fri.	Sat.	Sun.
EAST BOUND				
A.A.D.T.	22860	24870	23150	15520
R 12 / 24 - %	72.7	74	71.3	64.3
R 16 / 24 - %	87.6	88.6	85.9	81.6
AM Peak Hour	0800-0900	0800-0900	0900-1000	0900-1000
One-way flow at AM peak hour	1660	1930	1560	820
T - % (AM)	-	17.9	-	-
PM Peak Hour	1700-1800	1700-1800	1600-1700	1800-1900
One-way flow at PM peak hour	1420	1600	1390	880
T - % (PM)	-	16.3	-	-
Prop.of commercial vehicles - 16 hr.	-	19.1	-	-
WEST BOUND				
A.A.D.T.	15760	17070	16150	10970
R 12 / 24 - %	67.1	68.9	65.1	56.7
R 16 / 24 - %	85.9	87.5	83.2	78.5
AM Peak Hour	0800-0900	0800-0900	0800-0900	0900-1000
One-way flow at AM peak hour	1080	1280	900	420
T - % (AM)	-	25.4	-	-
PM Peak Hour	1800-1900	1800-1900	1600-1700	1800-1900
One-way flow at PM peak hour	1080	1230	980	650
T - % (PM)	-	21.4	-	-
Prop.of commercial vehicles - 16 hr.	-	28.5	-	-

3. OTHER INFORMATION AND COMMENT

4. Vehicle classification and occupancy - Monday to Friday

Time		Class of vehicle									
		Motor Cycle	Private Car	Taxi	Private LB	PLB	Goods veh.		Non Fr. Bus	Fr. Bus	
							Light	M & H		SD	DD
0700-0800	Pro	4.8	23.2	22.8	1.7	4.5	17.4	17.7	5.0	0.2	2.6
	Ocp	1.2	1.4	2.1	6.1	12.2	1.3	1.1	11.3	25.0	59.0
0800-0900 Peak hour	Pro	2.3	31.6	21.1	1.3	3.2	19.4	14.3	4.2	0.1	2.6
	Ocp	1.1	1.3	2.0	4.9	13.7	1.4	1.1	8.0	21.3	60.0
0900-1000	Pro	2.0	24.5	22.0	1.0	2.9	24.1	19.3	1.7	0.1	2.4
	Ocp	1.1	1.4	1.9	2.2	17.2	1.3	1.1	6.1	11.0	35.3
1000-1100	Pro	1.8	16.3	14.3	0.8	3.3	33.6	26.9	0.8	0.1	2.2
	Ocp	1.2	1.4	2.0	5.2	9.6	1.3	1.1	7.5	14.0	28.0
1100-1200	Pro	1.7	20.4	14.1	0.5	3.6	30.6	26.3	0.7	0.1	2.0
	Ocp	1.2	1.5	1.9	1.8	10.2	1.2	1.1	7.0	11.5	29.2
1200-1300	Pro	1.9	26.2	11.7	1.1	3.9	26.1	25.2	1.5	0.1	2.4
	Ocp	1.0	1.4	2.1	3.4	11.2	1.4	1.1	12.1	6.5	26.8
1300-1400	Pro	1.8	19.9	14.2	1.5	2.4	31.5	25.1	1.3	0.1	2.3
	Ocp	1.1	1.4	2.1	1.5	12.1	1.4	1.1	5.3	13.3	30.2
1400-1500	Pro	2.3	21.8	13.5	0.7	3.4	29.6	24.6	1.7	0.1	2.3
	Ocp	1.0	1.4	1.9	2.0	10.5	1.4	1.2	1.4	8.3	26.9
1500-1600	Pro	1.3	21.7	12.7	0.8	2.9	32.0	24.4	1.8	0.1	2.4
	Ocp	1.1	1.3	2.0	4.8	11.3	1.3	1.2	8.7	7.0	34.2
1600-1700	Pro	3.1	26.6	11.0	2.4	3.1	24.7	21.3	5.1	0.1	2.5
	Ocp	1.0	1.7	1.8	3.9	16.5	1.2	1.1	4.4	10.0	43.0
1700-1800	Pro	5.8	26.7	15.5	0.7	3.8	29.3	13.4	1.9	0.1	2.8
	Ocp	1.1	1.4	1.8	3.4	15.3	1.4	1.2	5.2	15.0	50.3
1800-1900	Pro	2.9	42.1	16.6	0.4	3.3	17.1	10.5	3.7	0.2	3.2
	Ocp	1.0	1.5	1.7	1.0	16.1	1.3	1.1	17.6	23.4	56.6
1900-2000	Pro	4.4	40.6	22.4	0.5	5.1	11.9	7.7	4.2	0.1	3.1
	Ocp	1.1	1.5	1.9	4.3	9.0	1.3	1.1	11.2	12.0	40.8
2000-2100	Pro	2.8	36.7	27.2	0.0	5.4	13.6	6.5	4.1	0.0	3.8
	Ocp	1.1	1.4	1.8	0.0	9.1	1.3	1.0	17.3	0.0	32.3
2100-2200	Pro	4.1	34.5	29.7	0.5	5.4	15.4	5.9	0.8	0.0	3.8
	Ocp	1.0	1.6	1.7	1.0	11.0	1.3	1.0	14.0	0.0	28.6
2200-2300	Pro	5.0	36.7	26.4	0.0	5.6	9.5	11.9	0.3	0.2	4.4
	Ocp	1.1	1.4	1.9	0.0	10.6	1.3	1.7	8.0	8.3	33.2
16 hours	Pro	2.9	27.3	17.8	1.0	3.7	23.8	18.4	2.6	0.1	2.7
	Ocp	1.1	1.4	1.9	3.7	12.2	1.3	1.1	9.5	16.0	40.2

Legend: Pro. Proportion of vehicles in % (Sum may not add up to 100% due to figure rounding)*

Ocp. Average occupancy of vehicles including both driver and passengers*

M&H Medium and Heavy

* All traffic data are collected from combined bounds